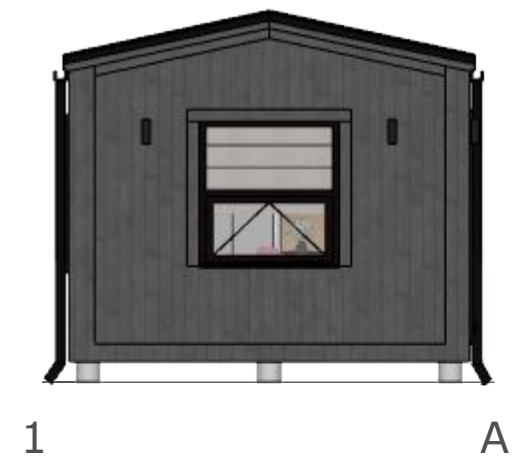
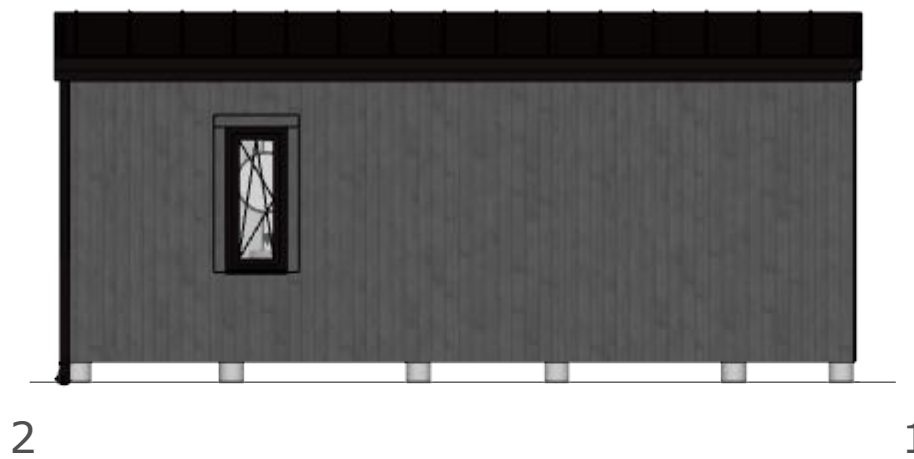
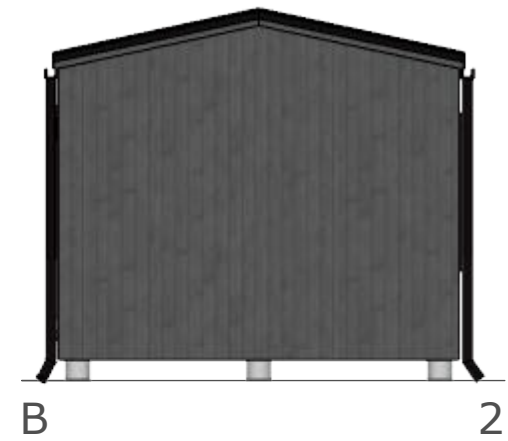


"FLAT" house
WMH 1-10 B



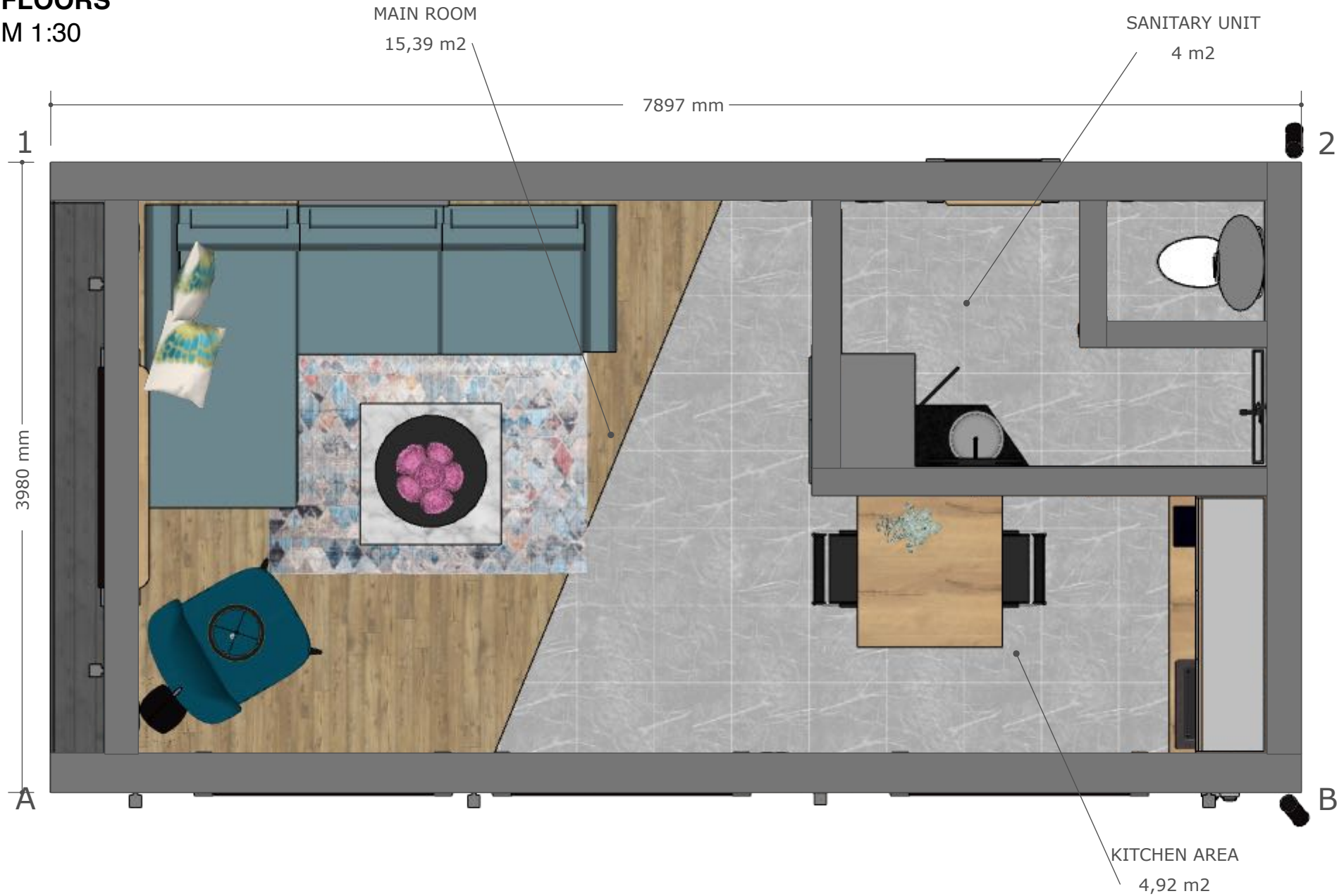
FACADES

M 1:75



FLOORS

M 1:30



WENDI
MODULAR



Construction materials

Beams 145 x 45 mm C24, KD16%

Beams 95 x 45 mm C24, KD16%

Beams 45 x 45 mm C24, KD16%

Beams 25 mm x 50 mm

OSB-3 10/22 mm 1250 x 2500

Vapour barrier ELT-Kraft VCL

Wood fiber board 12/24 mm

Mineralwool ISOVER STANDART 35 (KL35) G3 50 mm x 565 mm x 1170 mm

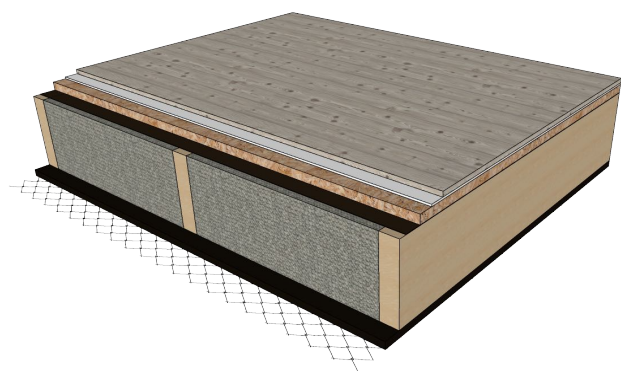
Mineralwool ISOVER STANDART 35 (KL35) G3 100 mm x 565 mm x 1170 mm

Mineralwool ISOVER STANDART 35 (KL35) G3 200 mm x 565 mm x 1170 mm

Wind barrier Cembrit Windstopper Extreme

Diffusion film TYVEK Pro Plus Tape

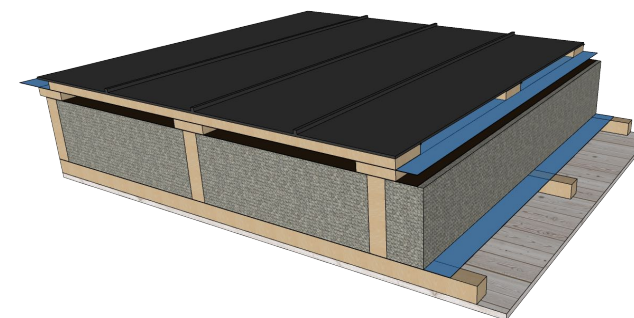
FLOOR

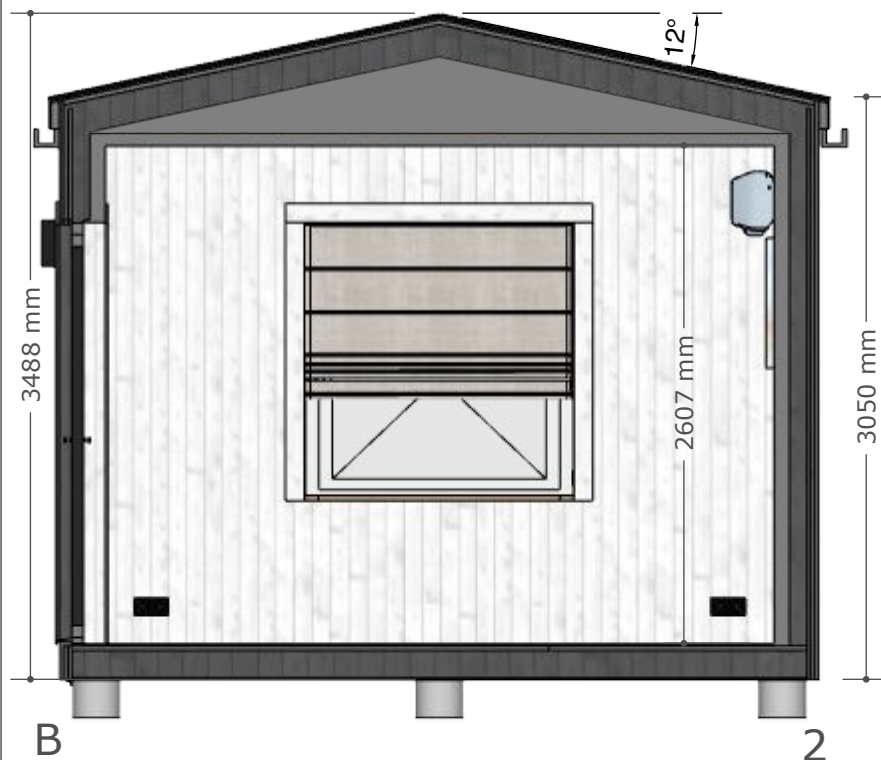


WALLS



ROOFING





Facade:

Roof– Profile Classic 50 Plus matt RR33 0,50mm, matt black

Facade boards– Wooden board (dried, KD16%) 145x22, finely sawn, painted (tone by choice)

Interior:

Flooring: vinyl laminate or parquet in living rooms, stone tiles in WC room.

Walls/ceiling: Wooden boards 120 x 12mm, painted (white lasur), tiles in shower section

Communications:

Electro installation, sockets, switches (Schneider Sedna Pro, color- graphite)

Junction box Schneider/ABB

Sewerage and water connection points

Water heater Electrolux EWH 80l (or analogue)

Sink with cabinet + faucet

Shower floor drain

Shower System Hansgrohe Ecostat 1001 CL (or analogue)

Built-in wall WC system Grohe + toilet bowl with soft-close rim

Ventilation in WC room S&P Silent Design D100

WC room– Electrical heated floor system DEVI with termoregulator DeviReg Smart (with wi-fi)

Kitchen unit with appliances (refrigerator, stove, fan, oven)

Windows & Doors:

Entrance doors, windows– PVC , 3 glass packet 36mm,

Average U-value– 0,96 W/m²k.

Interior doors: Veneered solid wood doors or painted wooden doors with visible wood texture

Internal wooden (ash tree) window sills

Exterior window sills– sheet metal, tone matched to the color of the roof

Price – 39330 Eur EXW

**Any visual or other changes in project by request*